

PROCO

PROCO PRODUCTS, INC.



Rubber Spool

The industry's widest selection of flexible connectors, expansion joints, penetration seals and rubber check valves are available from PROCO Products, Inc.

RUBBER EXPANSION JOINTS. ALL DESIGNS AVAILABLE: Hand-built wide arch, hand-built low profile super wide arch, low spring rate wide arch, PTFE lined molded arch, narrow and wide arch concentric and eccentric reducers and spherical types. Modifications to design included: Multiple arch and filled hand-built wide arch. Standard elastomers include: Butyl, Neoprene, Nitrile, CSM (similar to Hypalon®), EPDM, Natural and Viton®. Also available in PTFE and FEP. In-stock sizes range from 1" ID to 72" ID. Manufacturing capability to 120" ID. (Tooling is available to manufacture all non-stock sizes.) Proco also supplies U-type expansion joints in rectangular, oval and round configurations with internal or external rubber flanges for Turbine/Condenser applications. Request brochures: Series 230, Series 271, Series 261R/262R, Series 231/ET, Series 251/BT, Series RC 231/221, Series RE 231/221, Series 240/242, Series 233-L/234-L, Series 403 and Series 404.

PTFE Lined



Spherical



PTFE EXPANSION JOINTS. Called Couplings, Expansion Joints or Bellows. Only PROCO offers in-stock sizes ranging from 1" to 12" in 2, 3 and 5 convolutions. PROCO offers sizes ranging from 1" ID through 24" ID in 2 and 3 convolutions and 1" ID through 20" ID in 5 convolutions. Designed primarily for chemical services, the inexpensive cost and short face-to-face lengths make these products universal in application. Request Brochures: Series 440.

Integral Molded Flanged Wide Arch



RUBBER PIPE / VIBRATION DAMPENERS. For Vibration/Noise Reduction or lateral movements, PROCO rubber pipe is in-stock from 1" ID to 24" ID in lengths from 12" to 48" over-all length. Standard stocked elastomers are Neoprene and Butyl, although other elastomers are available. Request Brochure: Series 300.



Molded PTFE

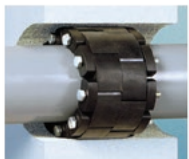
FLEXIBLE METAL HOSE CONNECTORS. Wire braid covered annular corrugated hose of stainless steel or bronze sweat end are in-stock in ID sizes 1/2" to 14". Available with flanged, grooved, threaded or sweat ends. Special hose assemblies can be manufactured to customer specifications with: One Braid or Two Braids and a selection of end fittings. Request Brochure: Series 6201.

Rubber Pipe Connectors



RUBBER CHECK VALVES. Rubber Check Valves are cost effective way to control back pressure from effluent operations. Offered as direct replacements for ineffective and maintenance-ridden flap type valves. Sizes range in ID from 1" to 84". Available in flanged or sleeve to fit on end of pipe. Also available as in-line rubber check valve. Request Brochures: Series 700

Flexible Metal Hose

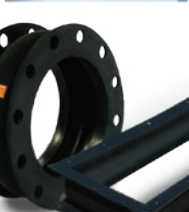


Check Valve



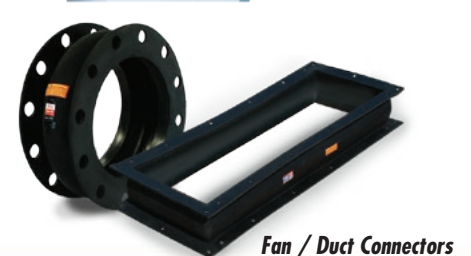
PENETRATION SEALS. Where piping passes through a wall or floor, use an all rubber Pen-Seal to statically seal annular space between wall/floor and pipe. Manufactured of EPDM, Nitrile and Silicone. Bolting can be supplied with Zinc-plated Carbon Steel or 316 Stainless Steel. Request Brochure: Pen-Seal.

Pipe Penetration Seals



LOW TORQUE GASKETS. For Plastic, Fiberglass, Glass or other piping which require minimum sealing forces. Manufactured in EPDM (with peroxide cure) and EPDM (with PTFE Film). In-stock sizes are available from 1/2" ID to 12" ID. Request Brochure: Series 9013.

NON-METALLIC DUCTING EXPANSION JOINTS / FAN CONNECTORS. PROCO manufactures a complete line of ducting expansion joints available in round or rectangular sizes with flanged or flat belt profiles for fan inlet and discharge applications. Elastomeric elements are offered for systems operating below 500°F and are manufactured of Viton®, Butyl, EPDM, Neoprene, Nitrile or elastoplastic materials. Request Brochure: Series 500.



Fan / Duct Connectors

CATALOG AVAILABLE. A complete three-ring binder with information and data sheets on PROCO's products is available without cost or obligation. Write, fax, phone or e-mail for your copy today!

Hypalon® an Viton® are registered trademarks of DuPont Dow Elastomers.

DISTRIBUTED BY:



31

Reasons To Specify

PROCO
PROCO PRODUCTS, INC.

1. Largest Inventory in North America.

Over \$2,000,000 of finished goods at our cost. More than all competitive sources combined. Hundreds of styles/compounds/sizes to 72" ID. We have your requirement in stock.

2. Longest Business Day. Don't worry about time zones, just call. Hours are 5:30 AM to 5:15 PM Pacific Time daily to serve your requirements.

3. Quick Shipments. In stock items can ship in 1-2 days after receipt of order.

4. Interchange Guide. Now you can identify competitive products. If it's a rubber expansion joint it's listed in the PROCO Interchange Guide. We can offer an equivalent for your application. Write for your copy or you can access the guide from our Web site.

5. Bar-Coded Computerized Inventory. When you call us, we can immediately advise you if your requirement is in stock or the specific day it's expected to be added to our inventory.

6. Toll-Free Phone Number. Check "price and delivery" using our Toll-Free Phones: USA/Canada 800-344-3246.

7. 24-Hour Fax. Speeds your drawings, quote requests, other communications. Dial 209-943-0242.

8. No Switchboard — No Waiting. Our sales staff answers the phone — not operators or secretaries. We're ready to handle your requirement.

9. Trade Shows support your sales activity. PROCO participates in at least four national shows annually, generating sales leads for you.

10. Emergency Service. Nights, weekends, even holidays. When you have an emergency, simply dial 800-344-3246 — several personal numbers will be available from the recorder. We'll solve the problem!

11. 24-Hour Phone Service. When we are closed, PROCO phones are monitored to accept your calls. Leave a message for priority service on the next working day.

12. Confirmed Quotations. We will confirm your request for "price and delivery" with a formal quotation documenting the discussion. Filed in the computer, the quotation makes future order entry easy.

13. Short Production Time means you will receive your order faster. Our standard delivery schedule for non-stock products is four to six weeks. If you're in a jam, we can ship your order out in two weeks for an expedite fee.

14. Emergency Production. Tell us when you need the expansion joint. We'll meet your schedule! Expediting service available.

15. Tracking UPS Shipments. Our computer is linked to UPS allowing immediate tracking of your shipment. We can tell you exactly where the order is and when you will receive it.

16. Preselected Truck Routing. On your first call, we can advise names of carriers we normally ship with to minimize "interline transfer." No more delayed, lost or "best way" shipments.

17. Estimated Truck/UPS Rate. When you call, our computer can advise the estimated UPS or truck charge for your shipment. You will know your shipping cost in advance.

18. Product Submittal Drawings can be prepared same-day on most products. Ask for a drawing. We'll assist you in preparing an impressive quotation for your customer.

19. Literature For The Engineer. Not just pretty pictures — the PROCO literature is jammed with charts, graphs and engineering data that answers questions and allows you to specify a product for your customers.

20. E-mail. Day or night, we're ready to automatically receive your messages. Our address is sales@procoproducts.com

21. Choice of Elastomers. Standard sizes are stocked in Butyl, EPDM, CSM (similar to Hypalon®), Neoprene, Nitrile, Natural and Teflon®. If it's an elastomer, we can provide it. More important, the PROCO Chemical/Rubber Compatibility Guide will assist you in elastomer selection. Write for your copy or you can access the guide from our Web site.

22. Experienced Sales Staff. With over 20 years average expansion joint experience, our excellent staff can answer questions and solve problems for you.

23. Order Status Report. Call and give us your Purchase Order No. or our Sales Order No. — our computer can instantly provide the status of your order, when it will be completed, or when and how it was shipped.

24. Fully Tooled. The most complete set of tooling in industry means that seldom will you or your customer be requested to "buy tooling."

25. Complete Product Line. If it's rubber/metal/plastic — we have it. Spool-type joints to 120" ID — molded, spherical, wide-arch, reducers, pipe penetration seals, unions, etc. — are all available. PROCO is a "one-call source" for your expansion joint requirements.

26. Standard "All-Service" Products. Much of our inventory is devoted to Chlorobutyl/Polyester products meeting FSA Standard Class I, II, and Special Class II. One product to perform many of our many customers' requirements!

27. Daily UPS Pick-Ups at all of our warehouses. Airbill number given when you call. Next-day, Second-day, etc. — we're used to making expedited shipments!

28. Association Memberships. As the Number One supplier of expansion joints in North America, we're members of Fluid Sealing Association REJ Division, NAHAD, AWWA, WEF — your assurance that we manufacture to association standards certifying a quality product.

29. Financially Secure. Some competitors have closed, sold, merged, or liquidated in recent years. PROCO will be here tomorrow. Check our D & B Rating: Duns #11-509-0326.

30. Expansion Joint Specialists. Our time and attention is not diverted by having to sell lagging, belting or packings. Our reputation is based on being the authority on expansion joints and check valves. We'll solve your problems.

31. Written Return Goods Policy. Buy too much, wrong size, wrong type? Send it back, freight paid. No restock charge on "stock" merchandise returned with a replacement order. No replacement order requires a minimum 10% restocking charge. Non-stock or custom merchandise is not returnable.

DISTRIBUTED BY:



THE EXPANSION JOINT AND CHECK VALVE PEOPLE