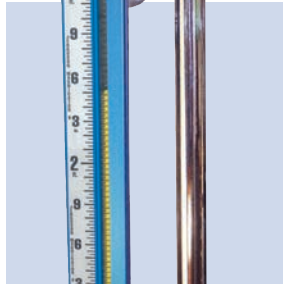
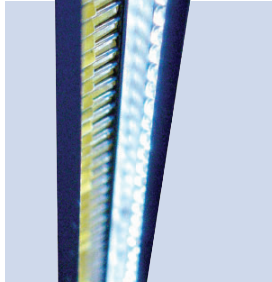
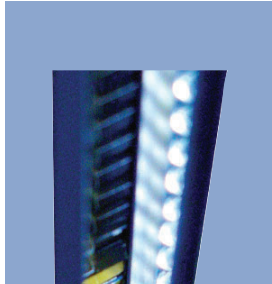


JERGUSON®

A PRODUCT OF CLARK-RELIANCE



Clark-Reliance®

Armoured Level Gages



(Series 20, 32, 40, 51, 300L, L-10)

TRANSPARENT GLASS

Reliable, accurate liquid level indication where fluid properties must be directly viewed.

Features:

- Recessed Gasket Surface
- Shrouded Covers
- Meets ASME/ANSI/NACE Standards
- Complete line of safety shut off valves available

Capabilities:

- Pressures from 300# ANSI to 10,000 psi
- Temperatures from cryogenic to 800°F (427°C)
- Large Volume Chambers Available
- Available with a wide variety of connection configurations
- Custom Engineered Solutions

Applications:

- Interface Applications
- Steam Applications w/mica shields to protect glass
- Hydrocarbon Processes
- Offshore Platforms
- Acid Storage
- Water Treatment
- Pulp & Paper



(Series 20, 32, 40, 51, 300L, L-10)

REFLEX GLASS

Reliable, accurate bi-color liquid level indication of fluid / gas interface.

Features:

- Low maintenance
- Recessed Gasket Surface
- Shrouded Covers
- Meets ASME/ANSI/NACE Standards

Capabilities:

- Pressures from 300# ANSI to 10,000 psi
- Temperatures from cryogenic to 800°F (427°C)
- Large Volume Chambers Available
- Available with a wide variety of connection configurations
- Custom Engineered Solutions

Applications:

- Low Pressure Steam
- Hydrocarbon Processes
- Offshore Platforms
- Acid Storage
- Water Treatment
- Pulp & Paper

OFF SHORE



VALVES



LED ILLUMINATORS



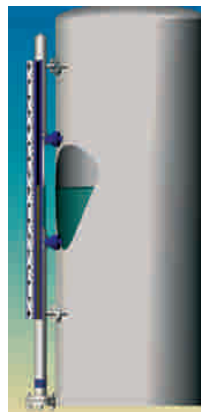
Water Oil (80W90)

WELD PAD



- Non-Frost Extension
- Expansion Coils
- Custom Options

Magnetic



(Magnicator II®)

MAGNETIC LEVEL GAGES

A highly reliable, low maintenance indirect reading level gage that offers control, indication and actuation with a single device.

Features:

- No glass in contact with process
- Reduced fugitive emissions
- Meets ASME/ANSI B31.1/B31.3
- Sch. 40 Chamber Standard Construction

Capabilities:

- Critical Service Applications
- Wide variety of materials available
- Wide variety of mounting configurations and connections

Applications:

- Broad range of clean liquids, steam, flammable or hazardous liquids.

INDICATORS



Illuminated Flag



Hermetically Sealed



Flag



Bi-Color LED



Bob Type



(RS-2)



(SAS-16)

POINT LEVEL SWITCHES

RS-2 POINT LEVEL SWITCH

Hermetically sealed bi-stable latching reed switch.

Features:

- Continuous 1 Amp max; 130 VDC/VAC max; 30 Watts max
- UL/CUL/CE/ATEX Approved

SAS-16 POINT LEVEL SWITCH

Snap Action latching switch for reliable high current device control utilizing the "tri-magnet" design.

Features:

- Highly reliable - No cams, springs, or mercury
- Highly resistant to vibration
- Rated 16 Amps @ 120 VAC
- UL/CUL/CE/ATEX Approved

TRANSMITTERS

REED SWITCH TRANSMITTER

A low cost loop powered step output transmitter for remote indication from a Mag II gage.

Features:

- Low Cost
- Available with 1/4" or 1/2" resolution
- UL/CUL Approved

MAGNETOSTRICTIVE TRANSMITTER

A loop powered continuous output transmitter for remote indication of a Mag II.

Features:

- HART Protocol Standard
- FM approved (CSA/CE/ATEX available)
- Easy Push Button Calibration



(RST-2)



(MTII 4200)

SIDE MOUNTED FLOAT SWITCHES



(MLS & MRS Series)

The MLS horizontal mounted level switch offers the highly reliable operating principle of repelling magnet forces.

Features:

- Compact 1-1/2" NPT Connection
- Snap Action Switching
- Integral Conduit Box
- SPDT or DPDT Switches
- Low .50 Min. S.G.



(BC & XC Series)

EXTERNAL CAGE Tri-Magnet Level Switch

The float operated external cage level switch features the unique tri-magnet design offering anti-vibration snap action without the use of springs, cams, or mercury.

Features:

- Tri-Magnet switching
- 316-SST Trim
- ANSI B31.1 & B31.3 Design
- No exposed moving parts
- NPT enclosure mounting connection

DISPLACER TRANSMITTERS



(DT Series)

Jerguson's Level Transmitter is one of the most advanced available, utilizing the proven buoyancy principle and incorporating state of the art electronics.

Features:

- 2 wire 24 VDC loop powered
- Hart Digital communication
- Simple local or remote calibration
- Operational flashing LED
- LVDT Technology
- Models available with external chambers



(DC Series)

DISPLACER SWITCH

The displacer operated switches are ideal for sump and other top mounted applications such as high or low level alarms.

Features:

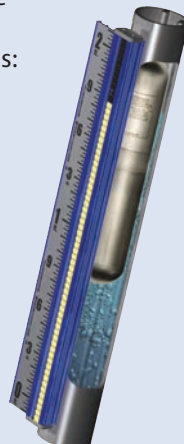
- Tri-Magnet switching
- 316-SST Trim
- ANSI B31.1 & B31.4 Design
- No exposed moving parts
- NPT enclosure mounting connection
- Models available with external chambers

NEW SOLUTIONS

FlashProof Mag

The FlashProof design addresses two potential problems that may occur with standard level indicators: boiling fluids and flashing vapors. This design should be considered for the following applications:

- Ethane
- Methane
- Liquid Nitrogen
- Carbon Dioxide
- Propane
- Butane
- Propylene
- Ethylene
- LPG/LNG
- Anhydrous Ammonia & other refrigerants
- All Cryogenic Applications



(FlashProof Mag)

High Pressure Float

Unique spherical design delivers the same focused magnetic characteristics and reliability as our standard float design.

- Non-pressurized design
- 3500-psi (241 bar) max
- 600°F (315°C) max
- 0.50 min SG



(High Pressure Float)

Hermetically Sealed Flag Indicator

Purged and sealed design available with either polycarbonate or glass tubing in a stainless steel housing, this is ideal for offshore applications.

- Polycarbonate tube rated to 500°F (260°C) process temperatures
- Glass tube rated to 1000°F (537°C) process temperatures



(Hermetically Sealed Flag Indicator)

MAGNETIC GUIDED WAVE RADAR



(MGWR)

Redundant level solution utilizing Magnetic Level Gage and Guided Wave Radar.

- Single set connections to process vessel
- ASME B31.1/B31.3 Design
- Remote signal independent from local indicator
- Ideal for applications with changing density, such as
 - Feedwater Heaters
 - Steam Drums*
 - Condensate Tanks
- Process temperatures from -328°F (-200°C) to 752°F (400°C)
- Pressure ranges from full vacuum up to 3500 psi (240 bar)

*ASME Section I Drums are subject to special rules of construction. Refer to JS-012010 for more information.

IN-CHAMBER GUIDED WAVE RADAR

- Measurement independent of density, conductivity, dielectric constant and temperature
- Measurement unaffected by foam or turbulent surfaces
- Process temperatures from -328°F (-200°C) to 752°F (400°C)
- Pressure ranges from full vacuum up to 5802 psi (400 bar) for GWR chamber alone
- Models available for interface applications; both total and interface level can be provided on one Hart® signal
- Models available with gas phase compensation for steam applications
- Communication Protocols
 - 4-20 mA SIL Hart®
 - Fieldbus Foundation™



(GWR)

Ultra-Sonic

JMS SERIES



(JMS Series)

Non-contact ultrasonic level transmitter provides continuous monitoring of linear level utilizing proven Time of Flight technology.

Features:

- 2 Wire 24Vdc loop powered
- Operating ranges up to 36 Ft.
- Measures liquid height, distance to liquid, contents or flow in open channels
- Simple push button calibration
- Built-in LCD display
- Automatic temperature compensation

Magnetostrictive

MAGNETOSTRICTIVE



(MTII-4200
in chamber)



(MTII-4200
Top-Mounted)

Loop Powered Continuous Output Transmitter for direct In-tank Level Applications.

Features:

- HART Protocol Standard
- FM approved (CSA/CE/ATEX available)
- Easy Push Button Calibration
- Variety of Mounting Sizes Available
- No stilling tube or displacement chamber required.
- No scheduled maintenance or recalibration

Capabilities:

- Accuracy of .01% full scale or .015"
- Repeatability of .01% full scale or .015"
- Temperatures of -30°F to 300°F (-34°C to 149°C)

Applications:

- General Process Control
- Batching Tanks
- Inorganic Chemicals
- Fuels and Solvent
- Industrial Organic Chemicals
- Detergents and Soaps

Tuning Fork

TUNING FORK



(Series 200)

A single point liquid level switch using vibrating Fork wetside, similar to a tuning fork, to detect the presence of a liquid.

Features:

- Externally visible "heart-beat" LED
- 1450 PSIG pressure rating
- 300°F (149°C) temp. Rating
- Time delay switching

After Market Services

Maintain Optimum Performance and Accuracy with OEM Parts

Critical spare parts for overnight delivery, direct from the manufacturer.

clark-reliance.com/parts



PLANT-OP CentersSM are the first and only of their kind – a network of professional service, repair, and sales facilities specializing in the level indication and control industry. PLANT-OP Centers are authorized, supported, and continually trained by the world's leader in visual process safety – Clark-Reliance.



PLANT-OP Centers' unique customer-driven capabilities and program offerings are based on years of field service experience, applications knowledge and end-user interface. PLANT-OP Centers' proven competencies will help you maximize your plant's performance to meet your demands, any time... anywhere.



PLANT-OP Centers provide you the safest and most economical means to maintain the optimum performance of your level gage instrumentation.





JERGUSON®

Jerguson® Gage and Valve is the leading supplier of level gaging products, offering the world's largest selection of liquid level gage glasses, magnetic gages, and accessories. Jerguson gages and valves have been installed on everything from the Stanley Steamer to the most advanced nuclear aircraft carrier. Jerguson pioneered and is the only manufacturer of complete product offerings in both traditional glass and magnetic-type gages. This wide array of product offering assures that solutions are based on customer needs . . . not on what is available.

Jerguson® provides you a single-source level measurement & control solution, bringing an entirely new plateau of technology to remote level indication. Jerguson introduces Tuning Fork Frequency Shift, Ultrasonic Gap, Displacer, Non-Contact Ultrasonics as well as Capacitance Technologies. This variety of measurement technologies allows you to select a product for nearly any type of level application.



Jerguson also provides in-depth application knowledge and resource specialists in "non-standard" products engineered to customer specifications.



*leading the industry with the most complete
line of innovative products and solutions*

Agency Approvals



PED



ATEX

Jerguson® designs and develops product specifications consistent with the customer's use for that product, and ensures that all products and services conform to their established quality specifications.

For the latest product and application solutions, visit jerguson.com



CLARK RELIANCE CORPORATION

16633 FOLTZ PARKWAY • STRONGSVILLE, OHIO 44149 U.S.A.

PHONE +1 (440) 572-1500 • FAX +1 (440) 238-8828

sales@clark-reliance.com • www.clark-reliance.com